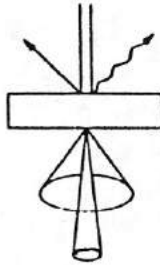


SEMT

Society of Electron Microscope
Technology

Affiliated to the Royal Microscopical Society



Please reply to
19 Bellfield Avenue
Harrow Weald, Middx
HA3 6ST
081-428 4264

25 May 1993

SEMT Excursion to RMC Centre for EM Oxford Brookes University

On Wednesday June 9th we have the opportunity to visit the Applications Laboratory of RMC for a demonstration of the Molecular Distillation apparatus and Cryo-ultramicrotomy. We are advised to travel by car but as parking on site is limited we should arrange to share transport as much as possible. The agreed timetable is :-

- 12.00 noon We meet in the foyer of the University.
- 12.30 We are invited to a light informal lunch at the White Horse within 5 minutes walk.
- 1.45 Presentation by RMC at the RMC Centre for EM
- 2.30 Informal tour of the facility and demonstration of equipment.

If you wish to arrive after lunch, ask at the Reception Desk for the RMC Centre for EM on the 2nd floor of the Biological and Molecular Sciences Building (Building S on the map).

Please let me know as soon as possible if you wish to join this expedition. If you cannot reach me on the telephone number above, a message may be left on tape on 071-982 6036.

Yours sincerely

A handwritten signature in cursive script that reads "G M Lewis". A long horizontal line is drawn underneath the signature.

Dr G M Lewis